



## M/V Sunny Lady

## Offshore equipment

### MBES

Bathymetry, backscatter and water column data

- Kongsberg EM2040 MKIIz



#### Features:

- 200-400 kHz wide frequency range
- Seabed image
- Water column display and logging for SIS users
- FM chirp
- Roll, pitch and yaw stabilisation
- Short pulse lengths, large bandwidth
- Transmit and receive nearfield focusing
- Depth rated to 6000 m

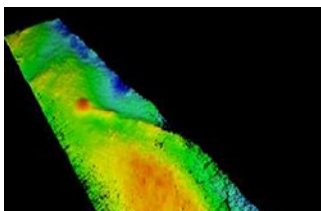
#### Options:

- Dual swath
- 600 kHz and 700 kHz modes
- EM® MultiFrequency Mode
- Water column display and logging
- Water column phase logging
- Extra detections
- Dual RX
- Dual TX

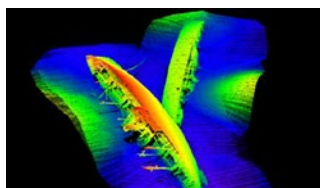


Alternative Multibeam Echosounder systems are available depending on specification and clients requirements. These can be easily installed to the vessels drop-down keel which avoids the need to dry dock during sensor installation.

- Norbit Winghead dual head multibeam Echosounder



- R2Sonic 2024 Multibeam Echosounder



## M/V Sunny Lady Capabilities

The **M/V Sunny Lady** is equipped to offer robust geophysical site investigation survey services.

### Shallow- & deep-water operations;

- MBES / MBES backscatter/water column data
- Sub Bottom Profiler
- Side Scan Sonar
- Magnetometer
- UHRS Sparker
- Starlink communication platform
- HiPAP positioning system
- Drop-down keel



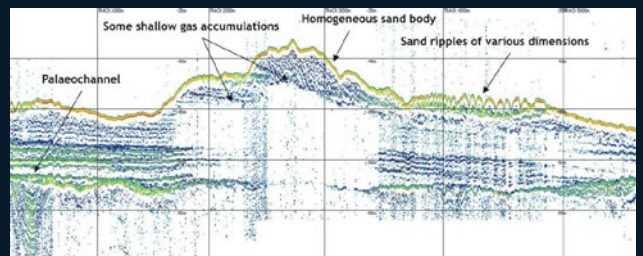
### SBP

**Shallow subsurface: geohazard detection, ground modelling**

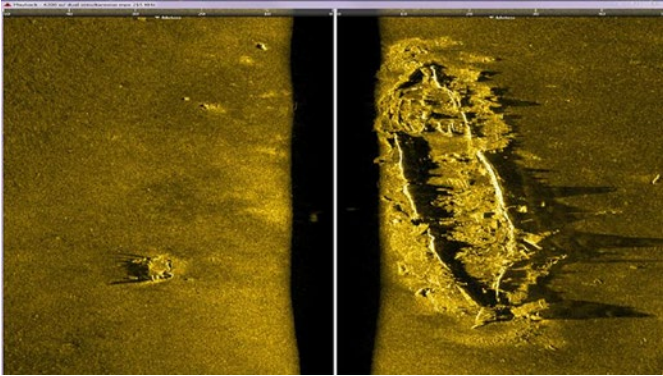
- Innomar Medium 100

#### Main characteristics

- SBP Frequency: 100kHz primary, 4-15kHz secondary
- Penetration: 10-15m depending on geology
- Vertical resolution : 0.25m
- Acquisition software: Innomar



## Offshore equipment



### Side Scan Sonar & Magnetometer options

Geomorphology, habitat/sediment mapping, pUXO detection

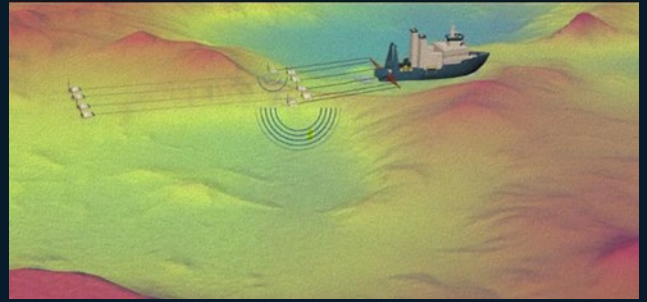
- Edgetech 4205 120/410/850kHz system



- Klein 5000 V2 system



- Geometrics G882 (towed behind Edgetech SSS tow fish or towed independently as transverse gradiometer system)



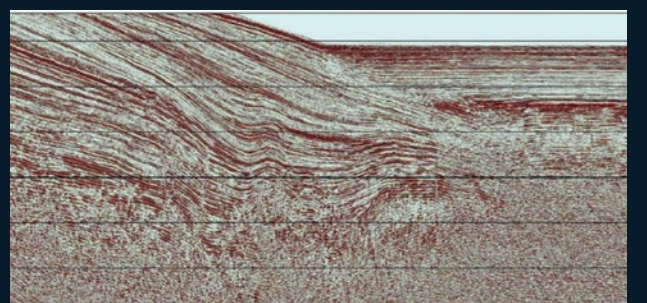
### UHRs

Deep subsurface: geohazard detection, ground modelling

- Variety of sound source(s) with positioning system LH-16



### Marine Digital Streamer(s)



## M/V Sunny Lady – Vessel Specifications

### VESSEL IDENTIFICATIONS

Year built .....	2022
Type .....	Geotechnical survey vessel
Ship owner .....	Teige Rederi AS
Shipyard .....	Cemre
Flag .....	Norway
Class .....	DNVGL
Class notation .....	1A ICE-1B TMON Fishing Vessel (s) Battery(Safety) Gas fuelled

### MAIN CHARACTERISTICS

LOA .....	86,50 m
LPP .....	77,20 m
Breadth (moulded) .....	17,80 / 18,0 m
Depth main deck .....	10,20 m

### DECK EQUIPMENT - Mac Gregor/Triplex/Rapp

Trawl Winches .....	2 x 80 t
Net Drums .....	2 x 68,5 t – 37 m <sup>3</sup>
Tailed Winch .....	1 x 50 t
Purse seine Winch .....	2 x 37 t
End Wire Winch .....	1 x 11 t
Breast-line Winch .....	1 x 16 t
Float Line Winch .....	1 x 11 t
Cork Line Stacker .....	Yes
Sink Line Stacker .....	Yes
Fish Pump Crane .....	13 m – 2 t
Netstacker crane .....	14,4 m – 4,5 t
Forward Deck Crane .....	17,5 m – 3 t
Forward Deck Crane .....	15 m – 4 t

### ACCOMODATION

Cabins for .....	26 persons
------------------	------------

### PERFORMANCE & CAPACITIES

Speed .....	16,5 kn
Deadweight at SWL .....	4360 t
RSW hold tanks .....	2800 m <sup>3</sup>
Fuel Oil .....	530 m <sup>3</sup>
Tech. Fresh water .....	120 m <sup>3</sup>
Fresh water .....	85 m <sup>3</sup>
LNG tank .....	350 m <sup>3</sup>

### MACHINERY

Main Engines .....	Wärtsilä 10V31DF 5500kW - 750RPM
Shaft Generator .....	3000 ekW
Reduction Gear .....	6000 kW PTO 3000 kW PTI 1500kW
Propeller Plant .....	4200 mm
Propeller Nozzle .....	AHT 0,4
Aux Engine .....	Wärtsilä 9L20DF - 1665 kW - 1200 rpm
Emergency Generator .....	130 kW - 1800 RPM
Tunnel Thruster (Fwd) .....	1400 kW
Tunnel Thruster (Aft) .....	1400 kW
Rudder .....	High Lift Flap
Steering Gear .....	1 x electro - hydraulic driven
Battery .....	1024 kWh Corvus

